

Single-Bolt Closures



Class S/Swing-Bolt Parts List

1. Hub	6. Yoke (Upper)	10. Swing Bolt Nut	15. Pressure Warning Device and Positioning Plate
2. Hub Hinge Lub	7. Yoke (Lower)	11. Swing Bolt Nut	16. Positioning Lugs
3. Head	8. Hinge Eye Bolt	12. Swing Bolt Bolt	
4. Hinge Arm	9. Cotter Pin (2" thru 6")	13. O-Ring	
5. Hinge Bolt	9A. Eye Bolt Nut (8")	14. Hinge Bolt Nut	

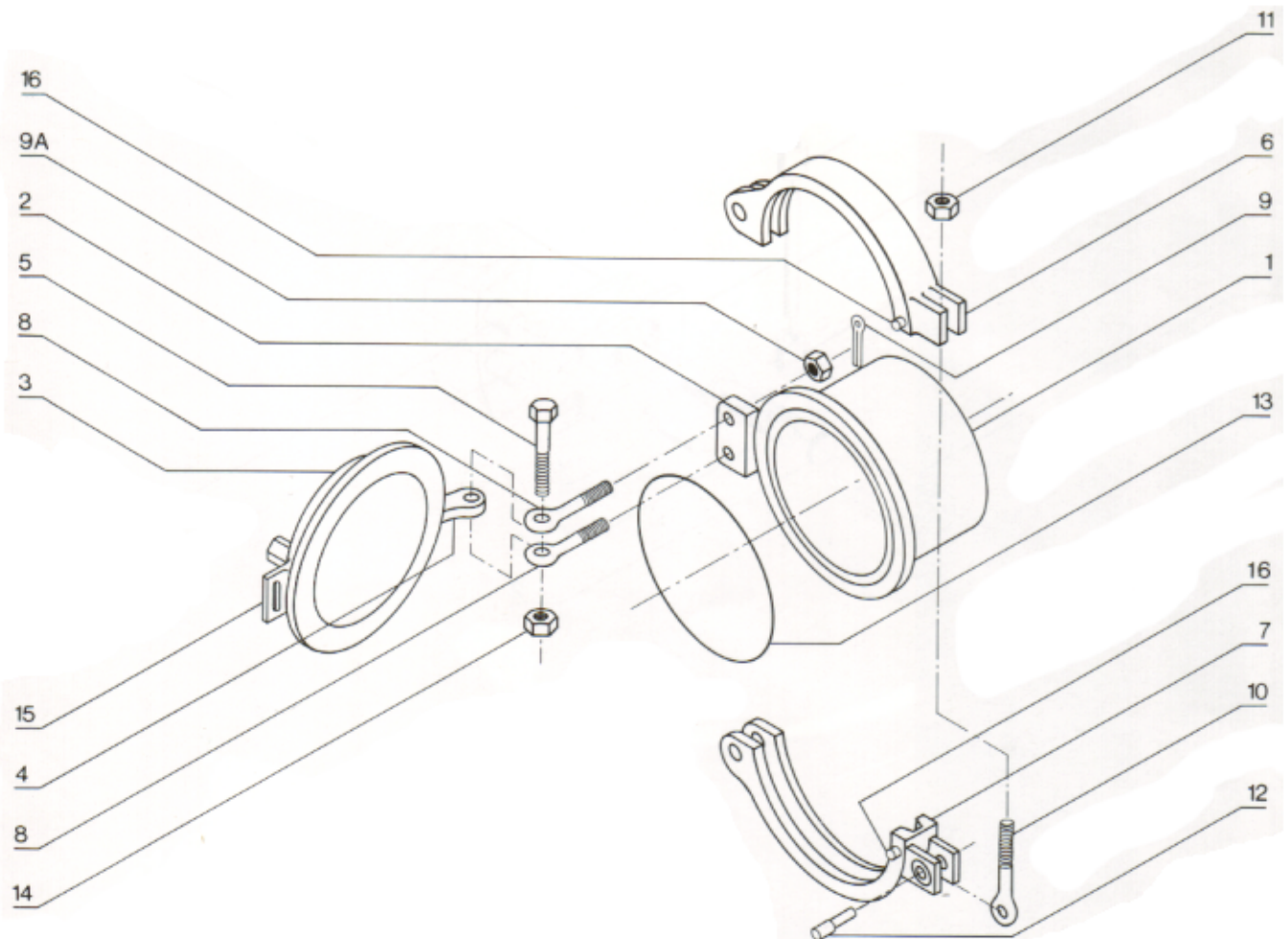
Disassembly & Reassembly

As indicated by examination of the exploded view, removal of the hinge pin or bolt permits quick and easy disassembly of the hinged closure.

The components may be removed in sequence most convenient for the specific job. During disassembly, however, each part should be clearly marked so that it can be replaced in the same relative position and on

the same closure unit. This is particularly important when more than one closure of the same size is to be disassembled.

During reassembly, care must be exercised that all components are properly aligned before operating the closure. Misalignment can cause excessive wear and leakage.

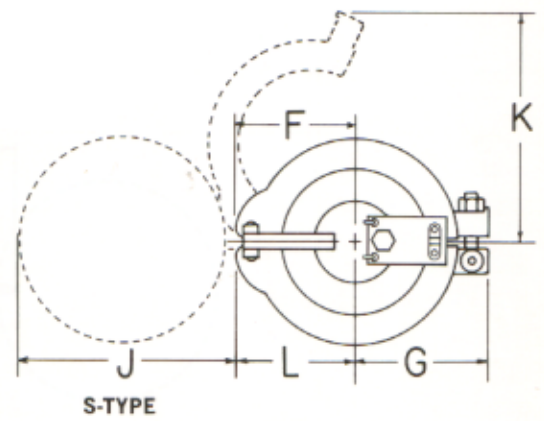
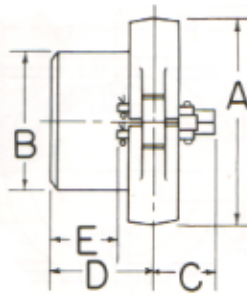
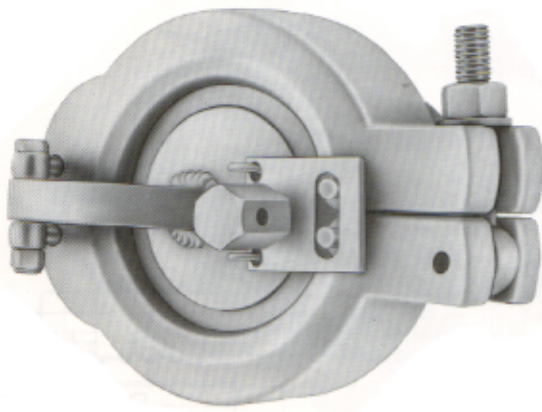


Spare Parts—It is suggested that the following spare parts be stocked for each closure:

Four O-Rings.....Part No. 13

When ordering spare parts, give amount, description, part number and size, pressure class and serial number of closure (located on front of yoke or ASME nameplate).

Example: (1) O-ring - Part Number 13 - 8" CL 600 - S/N 13845

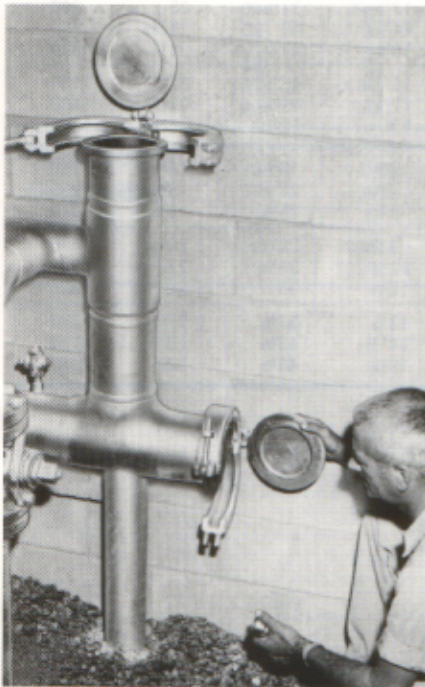


For ASME/ANSI 150-Lb, 300-Lb, and 600-Lb Services Class 150-S, 300-S, and 600-S

Nominal Size	Over-all A	O.D. at Welding Bevel B	Back to Face Max. C	Hub Length D	Clear Hub Length E	Center to Head Stop F	Center to Free End G	Opening Clearance J	Yoke Clearance K	Center To Hinge L	Approx. Weight Lbs
Class 150-S, 300-S, 600-S Single-Bolt											
2	4 ⁷ / ₈	2 ⁷ / ₈	2 ³ / ₄	3 ¹ / ₈	1 ⁹ / ₁₆	2 ⁵ / ₈	3 ⁹ / ₁₆	4 ¹ / ₁₆	6 ¹ / ₈	2 ¹ / ₄	10
3	6 ¹ / ₄	3 ¹ / ₂	2 ¹³ / ₁₆	3 ¹ / ₂	1 ⁹ / ₁₆	3 ³ / ₈	4 ¹ / ₄	5 ¹ / ₄	7 ⁵ / ₁₆	2 ⁷ / ₈	15
4	7 ³ / ₈	4 ¹ / ₂	3	4 ¹ / ₄	2 ⁷ / ₁₆	4 ³ / ₁₆	5	6 ⁹ / ₁₆	8 ⁵ / ₁₆	3 ¹¹ / ₁₆	25
6	9 ⁷ / ₈	6 ⁵ / ₈	3 ¹ / ₄	4 ¹ / ₄	2 ¹ / ₂	5 ⁷ / ₁₆	6 ¹ / ₄	9	10 ³ / ₁₆	4 ¹⁵ / ₁₆	50
8	11 ⁵ / ₁₆	8 ⁵ / ₈	4	4 ¹ / ₄	2 ¹ / ₈	6 ³ / ₈	7 ³ / ₈	10 ³ / ₄	13 ¹ / ₁₆	5 ³ / ₄	70

All dimensions are in inches. When ordering, please specify type, nominal size, bore, material and service conditions.

Hinged Closures are regularly furnished in carbon steel; however, they are also available in other metals and alloys.



For small diameter piping

Because of space limitations, it usually is impractical and uneconomical to use double-bolt Hinged Closures for blanking off small openings in pipe line and processing equipment. Regular Single-bolt is available in sizes 2" through 8".

The single-bolt adaptation provides significant advantages in many applications. There is only one bolt to operate, for example, and operating time is further reduced. And when speed of operation is a paramount requirement, the swing-bolt design affords even greater savings of time and effort. Such standard features as tapered-surface sealing, hinged-head convenience and O-ring economy are retained in the single-bolt design.

Single-bolt Hinged Closures have gained wide acceptance in the gas distribution industry for use on gas drier pots at meter and regulator stations serving large industrial and commercial customers.

Single-bolt Hinged Closures are offered in these designs:

Type	Nominal Sizes	ASME/ANSI Pressure Rating
150-S (swing bolt)	2" - 8"	150-lb (285 psi)
300 S	2" - 8"	300-lb (740 psi)
600 S	2" - 8"	600-lb (1480 psi)

Carbon steel is the standard material of construction for single-bolt Hinged Closures, but the also can be furnished in stainless steels and other materials depending upon availability of raw material.



For more information:
 ITAS, Postbox 739, 4090 Hafersfjord
 Phone: 51552104, Telefax: 51550600
 Mail: itas@itas-no.com
 Web: www.itas-no.com